

LEASEHOLD



Apartment

APARTMENT B10 THE ARC B10 53 MARTINGALE WAY, PORTISHEAD, BRISTOL BS20 7LH

Price Guide

£475,000

FEATURES

- New Build 3 Bedroom Apartment
- 3 Bathrooms
- Wrap around Balcony
- Harbourside Location
- Secure Gated Parking
- Lift to all Floors



bestjeffers

LETTINGS | MANAGEMENT | STUDENTS

3 Bedroom Apartment located in Portishead

Kitchen/Living/Dining Room

37'8" x 19'4"

Bedroom 1

14'9" x 12'9"

En-suite

5'6" x 6'2"

Bedroom 2

16'4" x 13'5"

En-suite

5'10" x 5'10"

Bedroom 3

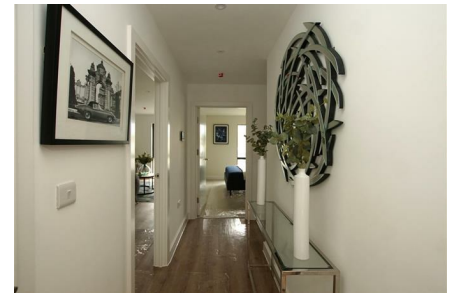
17'0" x 10'9"

Bathroom

9'6" x 6'2"

Balcony

Secure Gated parking



BESTE ESTATES SALES | 69 OAKFIELD ROAD, CLIFTON, BRISTOL, BS8 2BB

Call us on

01173259721

sales@bestestates.co.uk

Council Tax Band

C



Energy Efficiency Rating		
	Current	Potential
Very energy efficient - lower running costs		
(92 plus) A		
(81-91) B	83	83
(69-80) C		
(55-68) D		
(39-54) E		
(21-38) F		
(1-20) G		
Not energy efficient - higher running costs		
England & Wales	EU Directive 2002/91/EC	

Agents Note: Whilst every care has been taken to prepare these particulars, they are for guidance purposes only. All measurements are approximate and are for general guidance purposes only and whilst every care has been taken to ensure their accuracy, they should not be relied upon and potential buyers are advised to recheck the measurements.

